

Give As You Earn

What is Give As You Earn?

Give As You Earn is the UK's leading payroll giving scheme. It provides your employees with a flexible way to give tax-efficiently by enabling them to make donations straight from their gross salary to any UK charities. As an employer, Give As You Earn provides the opportunity to match your employees' donations.

The table below shows how your employees' donations can benefit through the scheme.

Employee pledge	Cost to employee	
	@ 22% tax	@ 40% tax
£5.00	£3.90	£3.00
£10.00	£7.80	£6.00
£50.00	£39.00	£30.00

Key benefits

The Give As You Earn scheme offers benefits to all involved – employers, employees and charities.

For the employer

- employee engagement – improves the morale, recruitment and retention of staff
- more focussed community programmes
- improved company image

For the employee

- ability to support charities of their choice on a regular basis
- flexibility – payments can be changed or stopped at any time
- tax-efficient

For the charity

- long-term regular support
- funds to cover core costs
- reduced administration

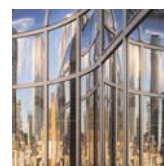
Give As You Earn is unique in that it offers a variety of giving options to ensure the highest level of choice and flexibility.

Charity Account – the Charity Account is a flexible option where employees can save monthly donations (minimum £10 per month) into an account ready for payments to be made to charities of their choice. Employees are issued with a 'charity chequebook' and CharityCard, so donations can be made over the phone, online, by post, by standing order or face to face.

Direct donation – employees nominate their favourite charities to benefit on a regular basis.

Staff charity fund – employees can pool their donations into a staff charity fund and arrange for them either to be distributed regularly to charities selected upfront or held specifically to be distributed at a later date – perhaps when donating to your charity of the year.

Personal charitable trust – an excellent option for high earners. Employees can place a minimum of £500 a month through Give As You Earn donations or £6,000 a year (eg at bonus time). The employee is then able to give away the income. A 'charity chequebook' and CharityCard can be used to do this.



Give As You Earn

How can CAF help?

CAF's Give As You Earn scheme is simple to set up and administer. Donations are taken directly from your employees' gross pay each month and distributed by us to their chosen charities. We can also link to and administer your matching scheme and provide a separate tax free location for your charitable budget through the CAF Company Account.

For further information please contact the CAF Company Services team on +44 020 7832 3000 or email company@cafonline.org

www.cafonline.org/company

"We're committed to helping our people to get involved in their local community. Our employee involvement programme offers a menu of community activities which includes volunteering, support for fundraising and payroll giving.

Give As You Earn is an integral part of our community investment programme and thanks to CAF is very easy to administer. It gives our employees the chance to give to charities they care about in a simple, tax efficient way."

*Nicki Heathcote, Communications Manager,
Boots Community Investment Division*



Charities Aid Foundation, 25 Kings Hill Avenue, Kings Hill, West Malling, Kent ME19 4TA
T: 01732 520 000 F: 01732 520 001 W: www.cafonline.org E: enquiries@cafonline.org
Registered charity number 268369

01988/0106