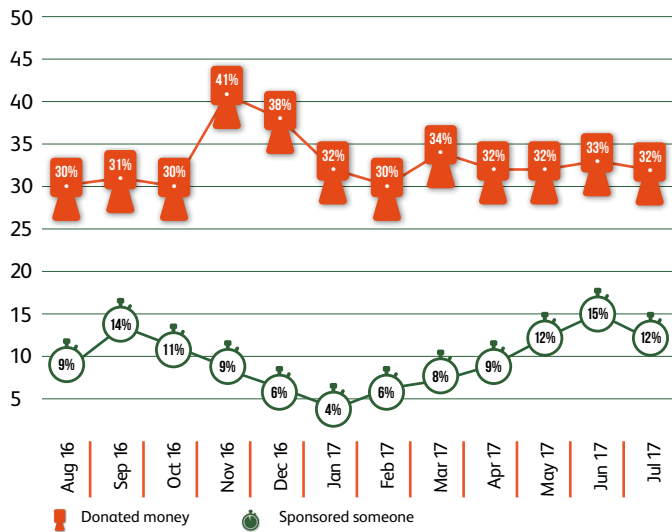
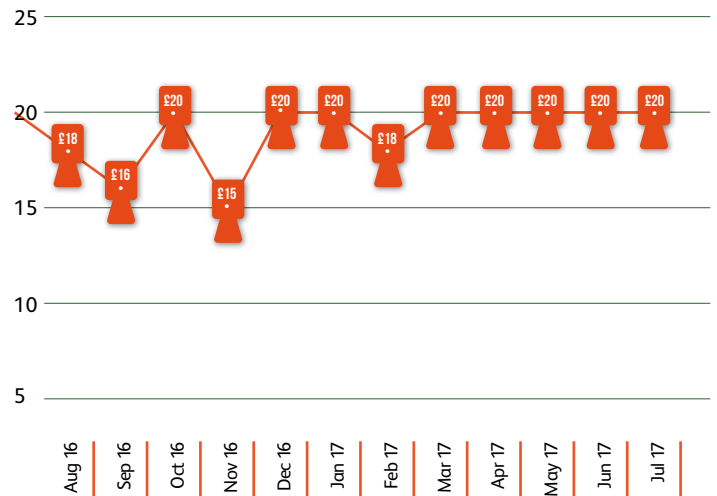


Proportion donating/sponsoring in the four weeks prior to interview

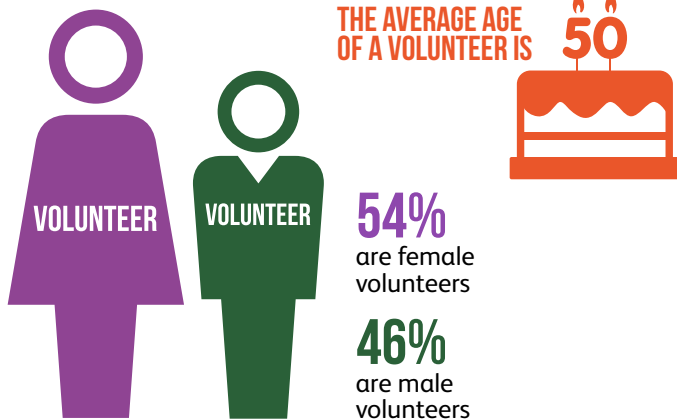


Median amount donated/sponsored in the four weeks prior to interview

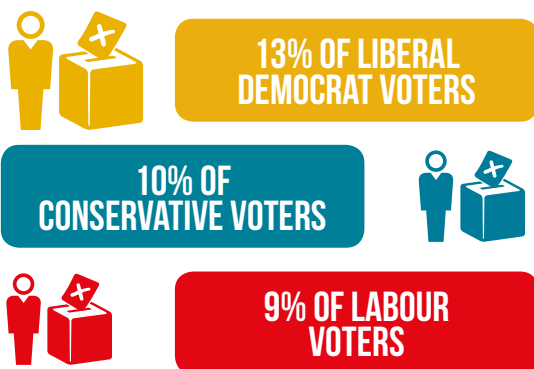


## VOLUNTEERING IN THE UK

### WHO VOLUNTEERS?



### VOLUNTEERING BY PAST VOTE



'Volunteering in the UK' based on fieldwork conducted from May to December 2016. Base: n=8,137. Data relate to people who had volunteered in the four weeks prior to interview.

### VOLUNTEERING BY REGION

