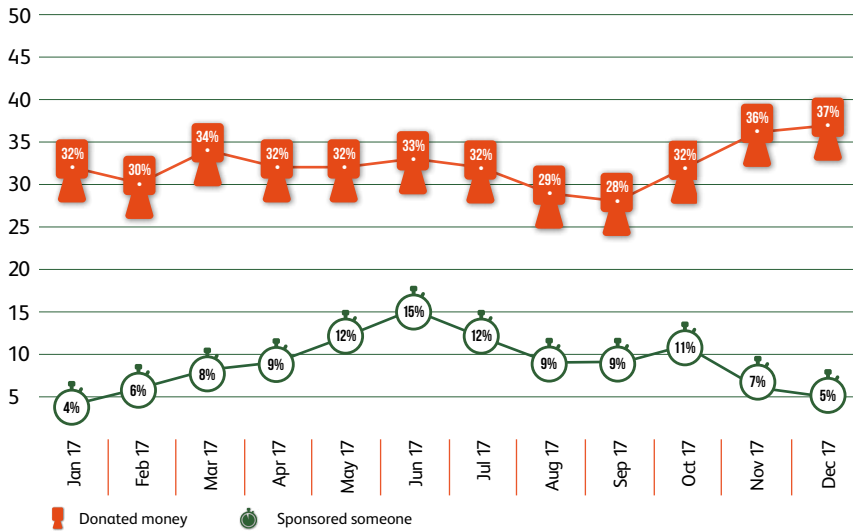
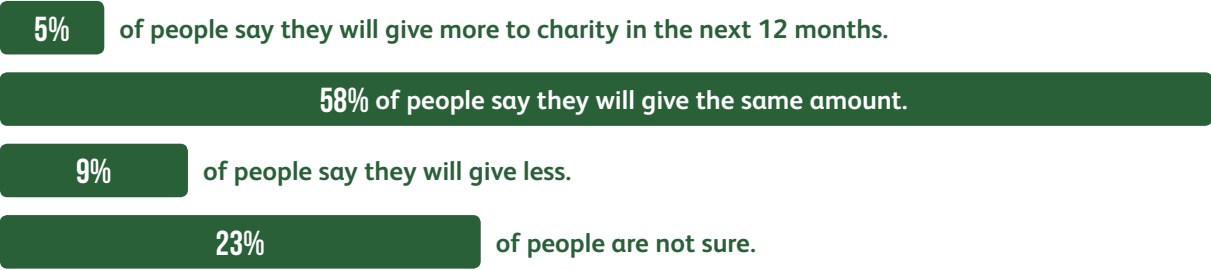


Proportion donating/sponsoring in the four weeks prior to interview



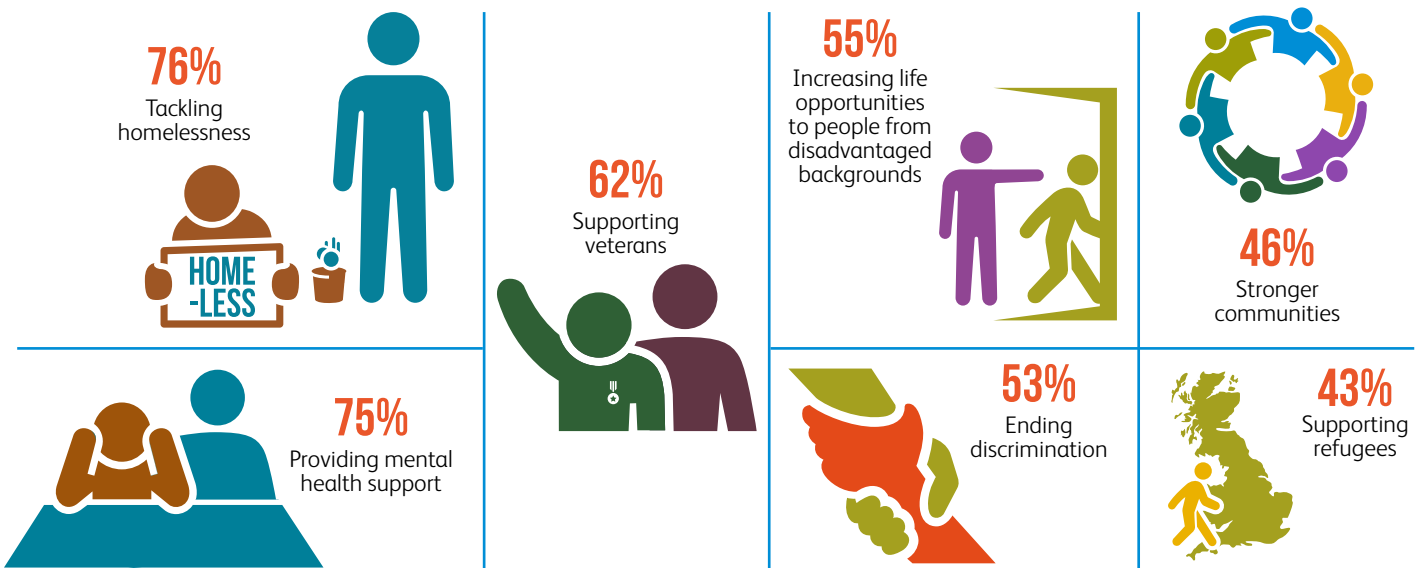
Median amount donated/sponsored in the four weeks prior to interview

IN THE NEXT 12 MONTHS



WORKING WITH GOVERNMENT

Which of the following areas, if any, do you think that charities should work with government on?



'Working with government' based on fieldwork conducted between 19th and 27th June 2016. Base = 1,016